

Modular Machines to Treat Industrial Wastewater

IX Water manufactures a modular, scalable machine for treating industrial wastewater.

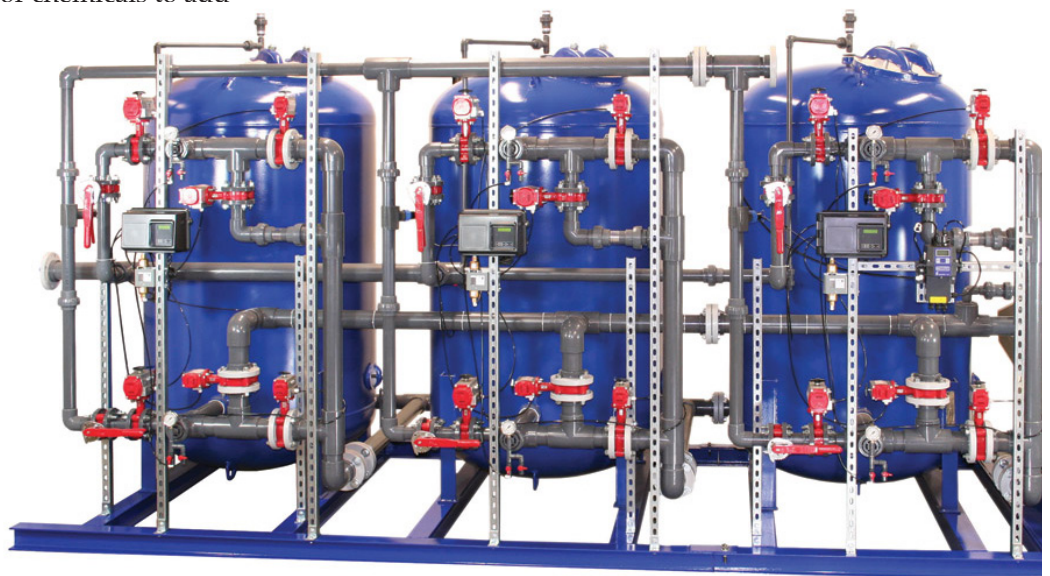
This system is a commercial application of technology developed at the USA Department of Energy's Los Alamos National Laboratory, with additional engineering and technology from NASA, New Mexico Tech, and the University of Texas.

The IX Water system reduces the cost of treating waste water by at least 50% while generating water clean enough to be discharged into the environment.

The IX Water Solution

The IX Water treatment train is a series of standardized, scalable modules that provide treatment specific to your needs without the cost and variability of a custom water treatment plant. These modules simply link together using standard fittings. Need additional treatment volume? Our modular design gives you virtually unlimited scalability. Select the modules you need to create a system that is right for you.

The key to IX Water effectiveness are reactors targeted to treat specific contaminant classes. Our field re-chargeable media lasts up to a year or more, and provides complete treatment at a much lower cost than other methods. IX Water cost even less than dumping wastewater and has the added benefit of creating a reusable resource. Automation and no consumables or chemicals to add makes operation a breeze.



The Water Doctors Are In

Our approach is different than other companies. We take a prescriptive approach, examining not just the contaminants upon which you are regulated, but everything in your wastewater. By focusing on the “total health” of your wastewater, we can design and install a system to turn your wastewater from a liability into an asset—for reuse, recycling, and resale.

IX Water OG Exceeds All National and Global Regulations for Produced Water Treatment

The chart below contains real-world test results from the IX Water system.

| Contaminant | Units | Pre-Treatment | Post Treatment | Effective Removal | Meet or Exceed Standards? |
|------------------|-------|---------------|----------------|-------------------|---------------------------|
| Benzene | mg/L | 3.68 | 0.0050 | 99.99% | YES |
| Ethylbenzene | mg/L | 1.33 | 0.0030 | 99.74% | YES |
| Toluene | mg/L | 8.73 | 0.0102 | 99.88% | YES |
| Xylenes, total | mg/L | 4.21 | 0.0036 | 99.91% | YES |
| Aluminum | ug/L | 18,300 | 35.7 | 99.80% | YES |
| Arsenic | ug/L | 87.9 | ND | 100% | YES |
| Barium | mg/L | 2.01 | 0.004 | 99.99% | YES |
| Beryllium | ug/L | 14.1 | ND | 100% | YES |
| Cadmium | ug/L | 18.1 | ND | 100% | YES |
| Calcium | mg/L | 1,030 | 0.050 | 99.99% | YES |
| Chromium III | ug/L | 330 | 1.7 | 99.48% | YES |
| Copper | ug/L | 634 | ND | 100% | YES |
| Iron | ug/L | 9,950 | 25.6 | 99.97% | YES |
| Iron (Suspended) | mg/L | 80 | ND | 100% | YES |
| Lead | ug/L | 1,250 | ND | 100% | YES |
| Magnesium | mg/L | 407 | ND | 100% | YES |
| Manganese | ug/L | 17,100 | ND | 100% | YES |
| Nickel | ug/L | 290 | 7.5 | 97.41% | YES |
| Potassium | mg/L | 151 | ND | 100% | YES |
| Thallium | ug/L | 8.6 | ND | 100% | YES |
| | | | Average | 99.81% | |



**The
Water Doctors
Are IN**

**Save 50%
or more on the
cost of treating
industrial
wastewater
compared to other
systems.**

The IX-Force

IX Water staff is comprised of industry-leading scientists and engineers from the U.S. Department of Energy, Texas A&M University, NASA, the University of Washington, New Mexico Tech, the University of New Mexico, and South Dakota Mines, along with staff from Dow Chemical, DuPont, Suez Environmental, Areva, Veolia, Eastman, and Amiad.



Copyright 2018-2021 IX Power Clean Water, Inc. All rights reserved.
21-10831

IX Power Clean Water, Inc.
Sixth Avenue Place, 17301 West Colfax Avenue, Suite 110 • Golden, Colorado 80401 USA
Tel: +1 303-277-9520 • Info@IxWater.com • www.IxWater.com

USA • Mexico • China • European Union